

THE iCUBE2-PRINTER

iCUBE Printers - Match to the diversified requirements of fast-printing smaller label jobs and variable printing, it helps you to reduce costs

From the experiences with the great variety of small-label-production we like to present you a printer family, which is a match to the diversified requirements of fast-printing smaller label jobs and variable printing, it helps you to reduce costs.

- ▶ Easy to handle
- ▶ Cost-efficient label production
- ▶ Intervall production
- ▶ Match to the diversified requirements of fast-printing

iCUBE² FEATURES

- ✓ Easy to handle with an onboard touch-display
- ✓ Additional maintenance functionalities
- ✓ Extra break button enables the user to produce in intervals, especially useful in unexpected situations in the production workflow
- ✓ Additional ink tank status indicator



TECHNICAL SPECIFICATIONS

Printer Technology

Drop on Demand Thermal Inkjet printing
Printable width is 215.9mm (8.5 inch)
Oversize max. 220mm
70,400 nozzles (14,080 per color)
Five channels: Cyan, Magenta, Yellow, Black (2x)

Print Speed

300mm/s at 1,600 x 1,600 dpi black
300mm/s at 1,600 x 800 dpi color
150mm/s at 1,600 x 1,600 dpi black and color
12 inches/s (21,6 km/day)

Print Quality

Black and color: 1,600 dpi native resolution

Operating Systems

Microsoft Windows XP and Windows 7 and Windows 8

Media Handling

Gap sensing
Black mark sensing
Continuous roll handling

Media Dimensions

Max media width: 225mm
Minimum media width: 50mm (2 inch)
Minimum media length: 50mm (2 inch)
Media thickness: 0.13 to 0.33mm (0.007-0.13 inch)

Power Interface

10 AMPS - 24VDC

Ink Cartridges

Dye based inks, colors: CMYKK, Non-refillable ink cartridges, Cartridge size: 250ml

Cutter

Integrated cutter

Operation data

Power supply	90-240 V ~50/60 Hz, PFC
Power consumption	max. 1200 W (5A bizt.)
Operating temperature	15-35 C°

Dimensions

Width 62 cm
Height 35 cm
Depth 50 cm
Weight 40 kg

Leading manufacturer of digital solutions in printing

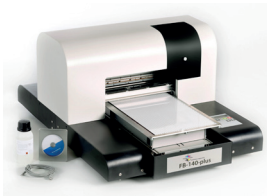
As a leading manufacturer of digital solutions for industrial printer systems we are specialized in delivering individual and customized solutions for a wide range of demands and challenges.

The continuous on-going development of our existing systems as well as developing new innovative systems are our motivation. The process of constantly reinventing ensures our customers great benefit.

To provide our customers the best possible service: All materials and consumables are in stock and available whether inks, printheads or other consumables. A steady shipping time guarantees our clients little downtime and thus a high efficiency. We are manufacturing in Germany.



PRODUCT PORTFOLIO - WE ARE MANUFACTURER OF DIGITAL SOLUTIONS



TI Printer 140 plus

Thermo-Ink-Printer for mechanical and chemical industrie requirements.



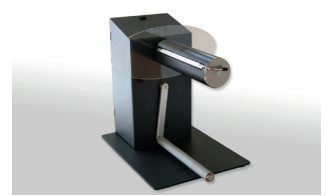
Speedstar 3000

Prints color labels in large numbers and high quality - inexpensively and quickly.



iCube3

Complete stand-alone printer solution with an onboard touch-display.



Unwinder EAB-320

External unwinder for big printing projects, suitable to our products.



INDUSTRY EXAMPLES

- ✓ automotive
- ✓ trade & logistic
- ✓ chemical industry
- ✓ mechanical engineering
- ✓ plant engineering
- ✓ electrical engineering
- ✓ pharmaceutical
- ✓ shipping
- ✓ craft and engraving
- ✓ companies

APPLICATION EXAMPLES

- ✓ machines, devices, plants
- ✓ company marking
- ✓ doorplates & advertising
- ✓ industry solution



OUR SERVICE

- ▶ individual consultation and implementation tailored to fit your needs and requirements
- ▶ service & support for any questions
- ▶ full availability of all consumables and spare parts